

Product Sheet

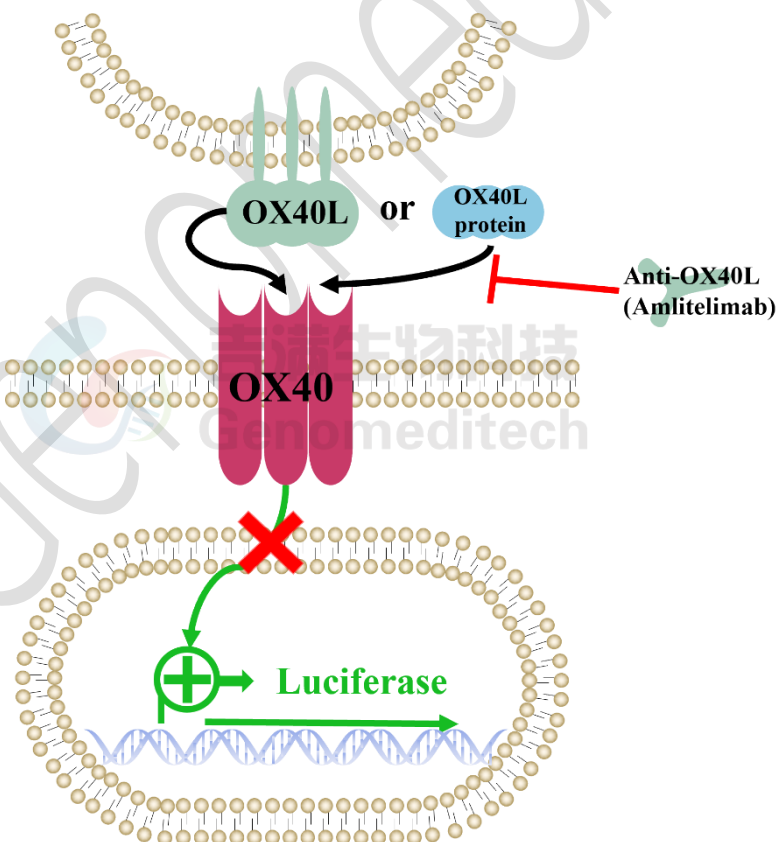
H_OX40 Reporter Cell Line

Catalog number: GM-C30855

Version 3.3.1.241029

OX40 is a cell membrane protein also known as CD134. It is an important costimulatory molecule that is mainly expressed on activated T cells and NK cells. OX40 signaling pathway in regulating immune response plays an important role in the process. When OX40 binds to its ligands, it activates multiple signaling pathways that promote T-cell proliferation, survival, and function. This signaling pathway is critical for regulating the activity of immune cells and the maintenance of immune responses. The OX40 signaling pathway is also considered to have potential applications in immunotherapy and immune regulation.

H_OX40 Reporter Cell Line is a clonal stable Jurkat cell line with constitutive expression of the OX40 gene and some adapter membrane molecules, along with signal-dependent expression of a luciferase reporter gene. When OX40L binds to OX40, it activates downstream signaling pathways, leading to the expression of luciferase. Blockade antibodies can block this signal transmission. The luciferase readout represents the activation level of the signaling pathway and can thus be used for evaluating the *in vitro* effects of drugs related to OX40/OX40L interaction.



Specifications

Quantity	5E6 Cells per vial, 1 mL
Product Format	1 vial of frozen cells
Shipping	Shipped on dry ice
Storage Conditions	Liquid nitrogen immediately upon receipt
Recovery Medium	RPMI 1640+10% FBS+1% P.S
Growth medium	RPMI 1640+10% FBS+1% P.S+3.5 µg/mL Blasticidin+0.75 µg/mL Puromycin
Note	None
Freezing Medium	90% FBS+10% DMSO
Growth properties	Suspension
Growth Conditions	37°C, 5% CO ₂
Mycoplasma Testing	The cell line has been screened to confirm the absence of Mycoplasma species.
Safety considerations	Biosafety Level 2
Note	It is recommended to expand the cell culture and store a minimum of 10 vials at an early passage for potential future use.

Materials

Reagent	Manufacturer/Catalogue No.
RPMI 1640	VivaCell/C3010-0500
Fetal Bovine Serum	Cegrogen biotech/A0500-3010
Pen/Strep	Thermo/15140-122
Blasticidin	Genomeditech/ GM-040404
Puromycin	Genomeditech/ GM-040401
Human OX40L Protein; His Tag	Genomeditech/ GM-83111RP
Anti-OX40L hIgG4 Antibody(Amltelimab)	Genomeditech/ GM-82533AB
Anti-H_OX40 hIgG2 Antibody(Ivuxolimab)	Genomeditech/ GM-23373AB
H_OX40L CHO-K1 Cell Line	Genomeditech/ GM-C35016
GMOne-Step Luciferase Reporter Gene Assay Kit	Genomeditech/ GM-040503

Figures

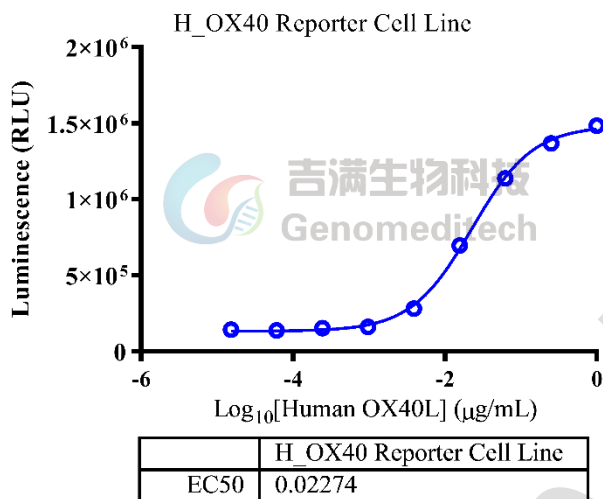


Figure 1 | Response to human OX40 ligand protein. The H_OX40 Reporter Cell Line (Cat. GM-C30855) at a concentration of 1E5 cells/well (96-well format) was stimulated with serial dilutions of Human OX40L Protein (Cat. GM-83111RP) in assay buffer (RPMI 1640 + 1% FBS + 1% P.S) for 6 hours. The firefly luciferase activity was measured using the GMOne-Step Luciferase Reporter Gene Assay Kit (Cat. GM-040503). The maximum induction fold was approximately [11.8]. Data are shown by drug mass concentration.

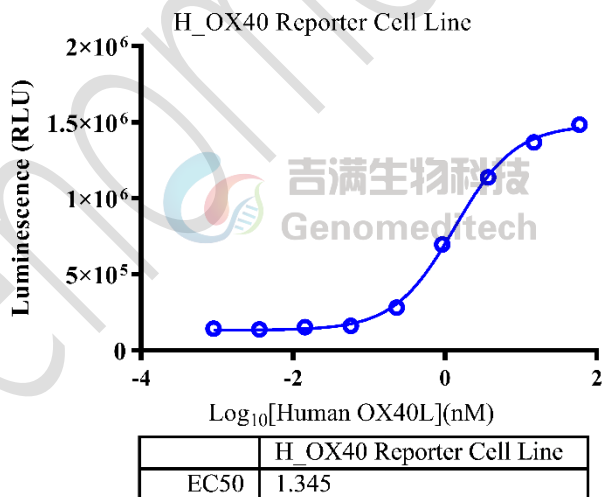


Figure 2 | Response to human OX40 ligand protein. The H_OX40 Reporter Cell Line (Cat. GM-C30855) at a concentration of 1E5 cells/well (96-well format) was stimulated with serial dilutions of Human OX40L Protein (Cat. GM-83111RP) in assay buffer (RPMI 1640 + 1% FBS + 1% P.S) for 6 hours. The firefly luciferase activity was measured using the GMOne-Step Luciferase Reporter Gene Assay Kit (Cat. GM-040503). The maximum induction fold was approximately [11.8]. Data are shown by drug molar concentration.

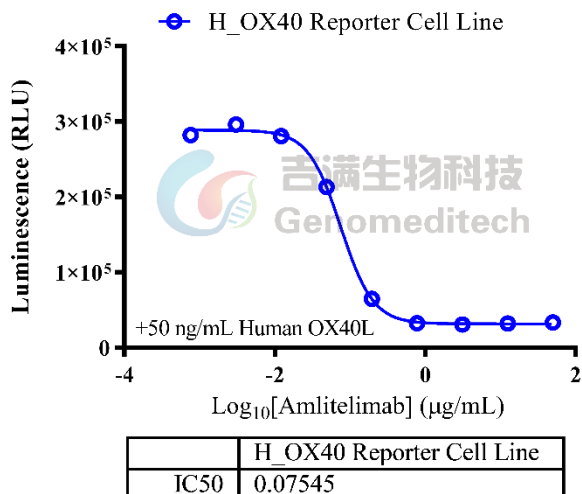


Figure 3 | Response to Anti-OX40L hIgG4 Antibody(Amltelimab). Begin by preparing the H_OX40 Reporter Cell Line (Cat. GM-C30855) at a density of 1E5 cells/well in a 96-well format. The serial dilutions of Anti-OX40L hIgG4 Antibody(Amltelimab) (Cat. [GM-82533AB](#)) were incubated with 50 ng/mL of Human OX40L Protein (Cat. [GM-83111RP](#)) for 1 hour in assay buffer (RPMI 1640 + 1% FBS + 1% P.S). After pre-incubation, the antibody-OX40L mixture was added to the H_OX40 Reporter Cell Line and incubated for 6 hours. Firefly luciferase activity is then measured using the GMOne-Step Luciferase Reporter Gene Assay Kit (Cat. [GM-040503](#)). The results indicated a maximum blocking fold of approximately [8.9]. Data are shown by drug mass concentration.

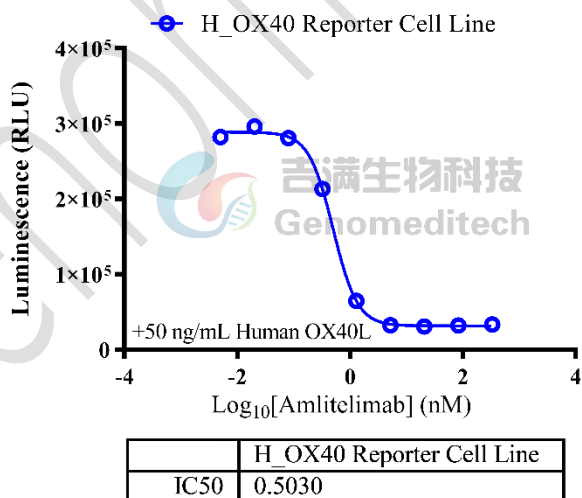


Figure 4 | Response to Anti-OX40L hIgG4 Antibody(Amltelimab). Begin by preparing the H_OX40 Reporter Cell Line (Cat. GM-C30855) at a density of 1E5 cells/well in a 96-well format. The serial dilutions of Anti-OX40L hIgG4 Antibody(Amltelimab) (Cat. [GM-82533AB](#)) were incubated with 50 ng/mL of Human OX40L Protein (Cat. [GM-83111RP](#)) for 1 hour in assay buffer (RPMI 1640 + 1% FBS + 1% P.S). After pre-incubation, the antibody-OX40L mixture was added to the H_OX40 Reporter Cell Line and incubated for 6 hours. Firefly luciferase activity is then

measured using the GMOne-Step Luciferase Reporter Gene Assay Kit (Cat. [GM-040503](#)). The results indicated a maximum blocking fold of approximately [8.9]. Data are shown by drug molar concentration.

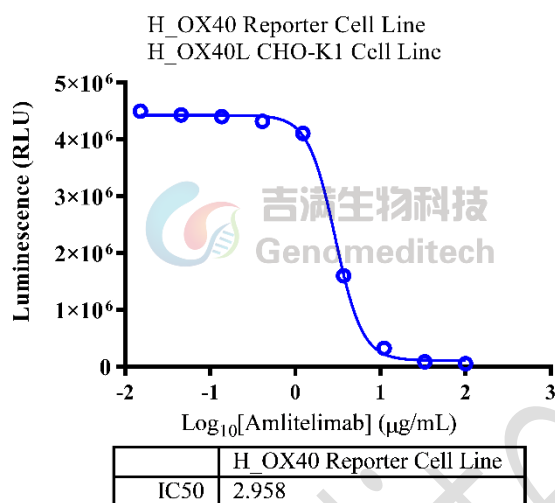


Figure 5 | Response to Anti-OX40L hIgG4 Antibody(Amltelimab). Serial dilutions of the Anti-OX40L hIgG4 Antibody (Amltelimab) (Cat. [GM-82533AB](#)) were incubated with 1E4 cells/well of the H_OX40L CHO-K1 Cell Line (Cat. [GM-C35016](#)) in a 96-well plate for 1 hour in assay buffer (RPMI 1640 + 1% FBS + 1% P.S). Subsequently, the H_OX40 Reporter Cell Line (Cat. GM-C30855) at a concentration of 1E5 cells/well was added, and the co-culture proceeded for an additional 6 hours. Firefly luciferase activity is then measured using the GMOne-Step Luciferase Reporter Gene Assay Kit (Cat. [GM-040503](#)). The results indicated a maximum blocking fold of approximately [87.8]. Data are shown by drug mass concentration.

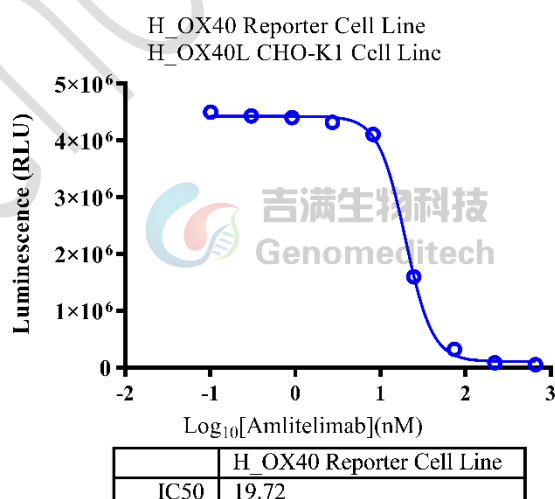


Figure 6 | Response to Anti-OX40L hIgG4 Antibody(Amltelimab). Serial dilutions of the Anti-OX40L hIgG4 Antibody (Amltelimab) (Cat. [GM-82533AB](#)) were incubated with 1E4 cells/well of the H_OX40L CHO-K1 Cell Line (Cat. [GM-C35016](#)) in a 96-well plate for 1 hour in assay buffer (RPMI 1640 + 1% FBS + 1% P.S). Subsequently, the H_OX40

Reporter Cell Line (Cat. GM-C30855) at a concentration of 1E5 cells/well was added, and the co-culture proceeded for an additional 6 hours. Firefly luciferase activity is then measured using the GMOne-Step Luciferase Reporter Gene Assay Kit (Cat. GM-040503). The results indicated a maximum blocking fold of approximately [87.8]. Data are shown by drug molar concentration.

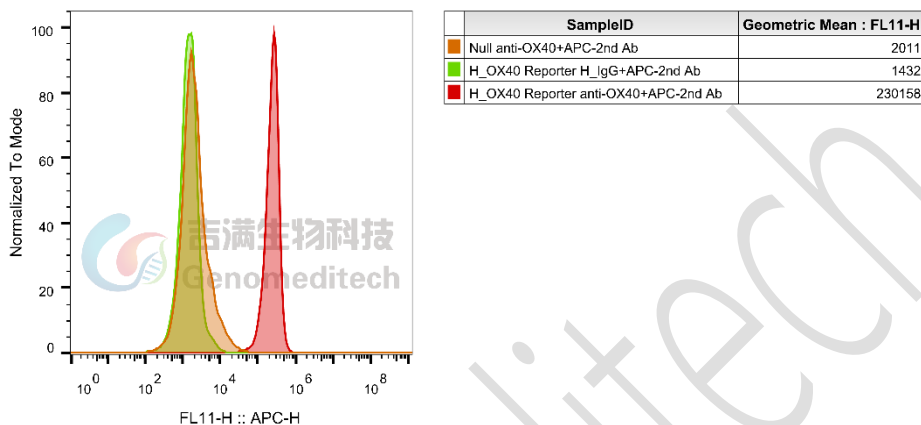


Figure 7 | H_OX40 Reporter Cell Line (Cat. GM-C30855) was determined by flow cytometry using Anti-H_OX40 hIgG2 Antibody(Ivuxolimab) (Cat. GM-23373AB).

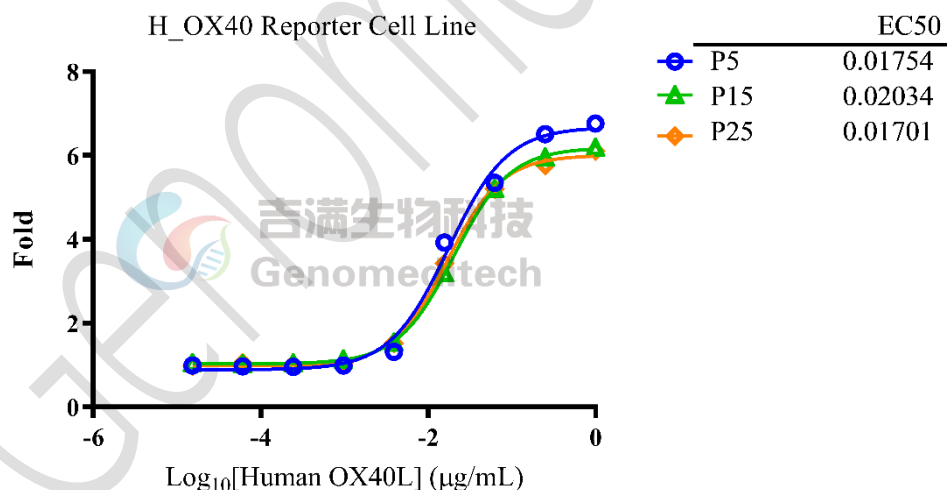


Figure 8 | The passage stability of response to Human OX40L ligand protein. The passage 5,15 and 25 of H_OX40 Reporter Cell Line (Cat. GM-C30855) at a concentration of 1E5 cells/well (96-well format) was stimulated with serial dilutions of Human OX40L Protein (Cat. GM-83111RP) in assay buffer (RPMI 1640 + 1% FBS + 1% P.S) for 6 hours. The firefly luciferase activity was measured using the GMOne-Step Luciferase Reporter Gene Assay Kit (Cat. GM-040503). Data are shown by drug mass concentration.

Cell Recovery

Recovery Medium: RPMI 1640+10% FBS+1% P.S

To insure the highest level of viability, thaw the vial and initiate the culture as soon as possible upon receipt. If upon arrival, continued storage of the frozen culture is necessary, it should be stored in liquid nitrogen vapor phase and not at -70°C . Storage at -70°C will result in loss of viability.

- Thaw the vial by gentle agitation in a 37°C water bath. To reduce the possibility of contamination, keep the O-ring and cap out of the water. Thawing should be rapid (approximately 2 - 3 minutes).
- Remove the vial from the water bath as soon as the contents are thawed, and decontaminate by dipping in or spraying with 70% ethanol. All of the operations from this point on should be carried out under strict aseptic conditions.
- Transfer the vial contents to a centrifuge tube containing 5.0 mL complete culture medium. And spin at approximately $176 \times g$ for 5 minutes. Discard supernatant.
- Resuspend cell pellet with the recommended complete medium. And dispense the suspension into 1 - 2 T-25 culture flasks.
- Incubate the culture at 37°C in a suitable incubator. A 5% CO_2 in air atmosphere is recommended if using the medium described on this product sheet.

Cell Freezing

Freezing Medium: 90% FBS+10% DMSO

- Centrifuge at $176 \times g$ for 3 minutes to collect cells.
- Resuspend the cells in pre-cooled freezing medium and adjust the cell density to 5×10^6 cells/mL.
- Aliquot 1 mL into each vial.
- Place the vial in a controlled-rate freezing container and store at -80°C for at least 1 day, then transfer to liquid nitrogen as soon as possible.

Cell passage

Growth medium: RPMI 1640+10% FBS+1% P.S+3.5 $\mu\text{g}/\text{mL}$ Blasticidin+0.75 $\mu\text{g}/\text{mL}$ Puromycin

Approximately 48-72 hours after the initial thawing, the cells can be passaged for the first time. After this initial passage, the culture medium can be adjusted to growth medium supplemented with antibiotics. If cells are not passaged within 48 hours, it is recommended to add some fresh recovery medium and place the flask horizontally.

- When the cell density reaches $1.5 - 2 \times 10^6$ cells/mL, subculture the cells. Do not allow the cell density to exceed 2×10^6 cells/mL.
- It is recommended to use T-25 flasks for subculturing.
- These cells are suspension cells, and it is recommended to use the "half-medium change" method to maintain optimal cell conditions during passaging.
- During passaging, you can directly add fresh growth medium to the culture flask, gently pipette to resuspend the cells, and then transfer the cell suspension to a new T-25 flask for continued culture.

Subcultivation Ratio: Maintain cultures at a cell concentraion between 3×10^5 and 1×10^6 viable cells/mL.

Medium Renewal: Every 2 to 3 days

Notes

- These cells are sensitive to density, so please ensure that the cell density is maintained within an appropriate range during culture and subculturing.
- During the first passage, pay attention to the nutrient supply; if not subculturing, make sure to add fresh recovery medium every other day as needed.

Related Products

OX40	
Cynomolgus_OX40L CHO-K1 Cell Line	H_OX40 CHO-K1 Cell Line
H_OX40L CHO-K1 Cell Line	H_OX40L HEK-293 Cell Line
Anti-H_OX40 hIgG2 Antibody(Ivuxolimab)	Anti-OX40L hIgG1 Reference Antibody(Oxebio)
Anti-OX40L hIgG4 Antibody(Amltelimab)	Anti-OX40L hIgG4 Reference Antibody(Amlbio)
Biotinylated Human OX40L Protein; His-Avi Tag	Cynomolgus OX40 Protein; His Tag
Cynomolgus OX40L Protein; His Tag	Cynomolgus OX40L Protein; mFc Tag
Human OX40 Protein; His Tag	Human OX40L Protein; His Tag
Human OX40L Protein; mFc Tag	
IL-4/IL-13	
IL-4 Reporter Cell Line	IL-4/IL-13 Reporter 293 Cell Line
IL-4/IL-13 Reporter 293 DDX35TM Cell Line	Cynomolgus_IL4R CHO-K1 Cell Line
H_IL4R CHO-K1 Cell Line	
Anti-IL-4R hIgG1 Antibody(12B5)	Anti-IL4R hIgG4 Antibody (Dupilumab)
Anti-IL4R hIgG4 Reference Antibody (Dupbio)	
IL-31	
H_IL-31 Reporter Cell Line	Cynomolgus_IL31RA CHO-K1 Cell Line
H_IL31RA CHO-K1 Cell Line	H_IL31RA HEK-293 Cell Line
H_IL-31RA OSMR Baf3 Cell Line	
Anti-IL31 hIgG1 Antibody(mAb33)	Anti-IL31RA hIgG1 Antibody(NA633)
Anti-IL31RA hIgG2 Antibody(Nemolizumab)	Anti-OSMR hIgG4 Antibody(Vixarelimab)

Limited Use License Agreement

Genomeditech (Shanghai) Co., Ltd grants to the Licensee all intellectual property rights, exclusive, non-transferable, and non-sublicensable rights of the Licensed Materials; Genomeditech (Shanghai) Co., Ltd will retain ownership of the Licensed Materials, cell line history packages, progeny, and the Licensed Materials including modified materials.

Between Genomeditech (Shanghai) Co., Ltd, and Licensee, Licensee is not permitted to modify cell lines in any way. The Licensee shall not share, distribute, sell, sublicense, or otherwise provide the Licensed Materials, or progenitors to third parties such as laboratories, departments, research institutions, hospitals, universities, or biotechnology companies for use other than for the purpose of outsourcing the Licensee's research.

Please refer to the Genomeditech Cell Line License Agreement for details.

Genomeditech